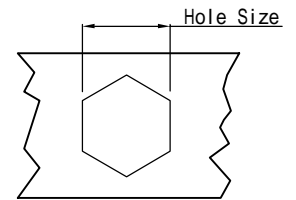
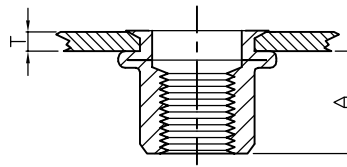
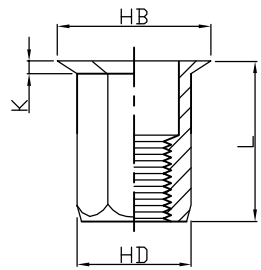


# Rivet Nuts - 铆螺母

## RHH-FHB (Reduce Hex Head Full-Hex Body)

## 小沉头全六角

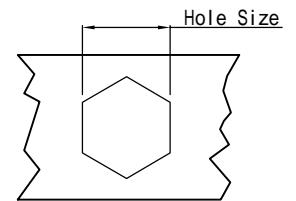
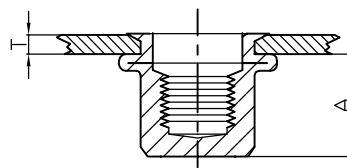
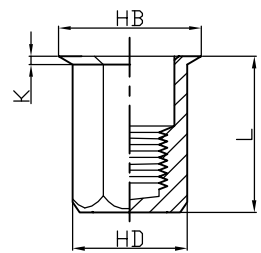


UNIT (单位): mm

螺纹 Thread	编号 P/N	T(GRIP RANGE)		A Ref	Hole Size $^{+0.1}_0$	HD	HB	K	L
		Min	Max						
M4*0.7	RHH-FHB-0425	0.5	2.5	6.7	6.0	5.9	7.0	0.5	11.0
M5*0.8	RHH-FHB-0530	0.5	3.0	9.0	7.0	6.9	8.0	0.5	14.5
M6*1.0	RHH-FHB-0635	1.0	3.5	10.0	9.0	8.9	10.0	0.6	16.0
M8*1.25	RHH-FHB-0840	1.0	4.0	11.5	11.0	10.9	12.0	0.6	18.0
M10*1.5	RHH-FHB-1055	2.0	5.5	14.5	13.0	12.9	14.5	0.7	23.5

## RHH-FHBC (Reduce Hex Head Full-Hex Body Close End)

## 小沉头全六角 (盲孔)



UNIT (单位): mm

螺纹 Thread	编号 P/N	T(GRIP RANGE)		A Ref	Hole Size $^{+0.1}_0$	HD	HB	K	L
		Min	Max						
M4*0.7	RHH-FHBC-0425	0.5	2.5	11.7	6.0	5.9	7.0	0.5	16.0
M5*0.8	RHH-FHBC-0530	0.5	3.0	14.2	7.0	6.9	8.0	0.5	20.0
M6*1.0	RHH-FHBC-0635	1.0	3.5	14.5	9.0	8.9	10.0	0.6	20.5
M8*1.25	RHH-FHBC-0840	1.0	4.0	16.5	11.0	10.9	12.0	0.6	23.0
M10*1.5	RHH-FHBC-1045	1.5	4.5	21.0	13.0	12.9	14.5	0.7	28.5