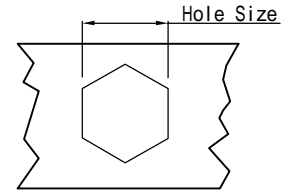
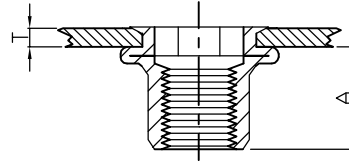
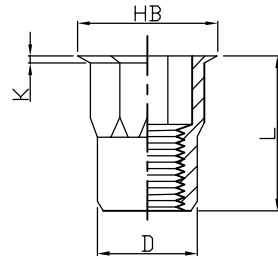


Rivet Nuts - 铆螺母

RHH-IHB/SS (Reduce Hex Head Inner-Hex Body)
Stainless Steel 304 316

小沉头内外六角
不锈钢 304 316



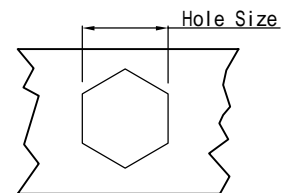
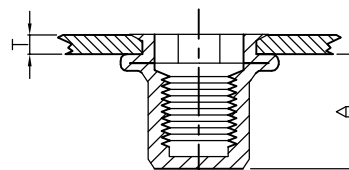
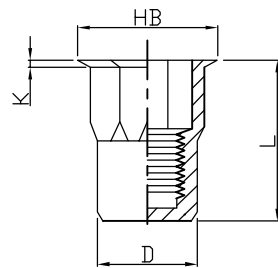
UNIT(单位) : mm

螺纹 Thread	编号 P/N	T(GRIP RANGE) Min Max	A Ref	Hole Size $+0.1$ 0	D	HB	K	L
M4*0.7	RHH-IHB/SS-0420	0.5-2.0	8.0	6.0	5.9	7.0	0.5	12.0
M5*0.8	RHH-IHB/SS-0525	0.5-2.5	8.2	7.0	6.9	8.0	0.5	13.0
M6*1.0	RHH-IHB/SS-0635	0.5-3.0	10.7	9.0	8.9	10.0	0.6	16.0
M8*1.25	RHH-IHB/SS-0840	1.0-3.5	11.2	11.0	10.9	12.0	0.6	17.5
M10*1.5	RHH-IHB/SS-1045	1.0-4.0	13.5	13.0	12.9	14.5	0.7	21.0

RHH-IHBC/SS (Reduce Hex Head Inner-Hex Body Close End) 小沉头内外六角(盲孔)
Stainless Steel 304 316

不锈钢 304 316

(实物图片)



UNIT(单位) : mm

螺纹 Thread	编号 P/N	T(GRIP RANGE) Min Max	A Ref	Hole Size $+0.1$ 0	D	HB	K	L
M4*0.7	RHH-IHBC/SS-0420	0.5-2.0	11.5	6.0	5.9	7.0	0.5	15.5
M5*0.8	RHH-IHBC/SS-0525	0.5-2.5	13.5	7.0	6.9	8.0	0.5	18.0
M6*1.0	RHH-IHBC/SS-0635	0.5-3.0	15.8	9.0	8.9	10.0	0.6	21.5
M8*1.25	RHH-IHBC/SS-0840	1.0-3.5	18.2	11.0	10.9	12.0	0.6	24.0
M10*1.5	RHH-IHBC/SS-1040	1.0-4.0	23.2	13.0	12.9	14.5	0.7	30.5